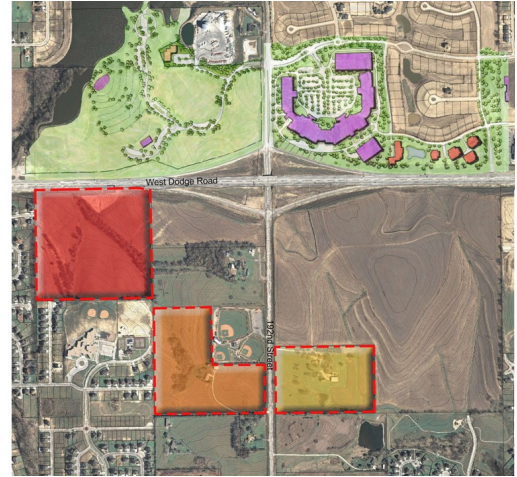


## No Debt Raw Land

### Land

Three parcels of land were acquired, without the use of debt, near the 192nd & West Dodge Expressway intersection in Omaha, Nebraska in 2008 & 2009. Originally purchased as a buy and hold, the current economic environment has given us the opportunity to pursue a number of value-enhancing strategies, including entitlement and negotiations with the city.

For additional information, please contact:  
Brian Morrissey  
Jasper Stone Partners  
bmorrissey@jasperstone.com  
(w): (402) 778-9070



**Address:** 192nd Street & West Dodge Expressway  
**Location:** Omaha, Nebraska  
**Project Size:** 83 acres  
**Asset Type:** Land  
**Acquisition Date:** April 21, 2008; June 19, 2008; May 28, 2009